

Consumption characteristics in Europe – derivation of representative test profiles - requirements for test rigs

MetroWaMet

Metrology for real-world domestic water metering

Daniel Schumann, 1.45



- Reliable and resource-efficient supply of clean potable water is essential for a high quality of life
- Water supply to households, billing of water consumption and manufacturing of domestic water meters represent a 100 billion € business (1)
- Prescribed current test regimes for domestic water meters state to be run at well-defined constant and reproducible flow rates (2,3)
- **BUT:** Strong deviation of actual water consumption

Example: Q_3 : 4 m³/h R160

- Q_1 : minimum flowrate

$$Q_1 = \frac{Q_3}{R} = 25 \text{ L/h}$$

- Q_2 : transitional flow rate

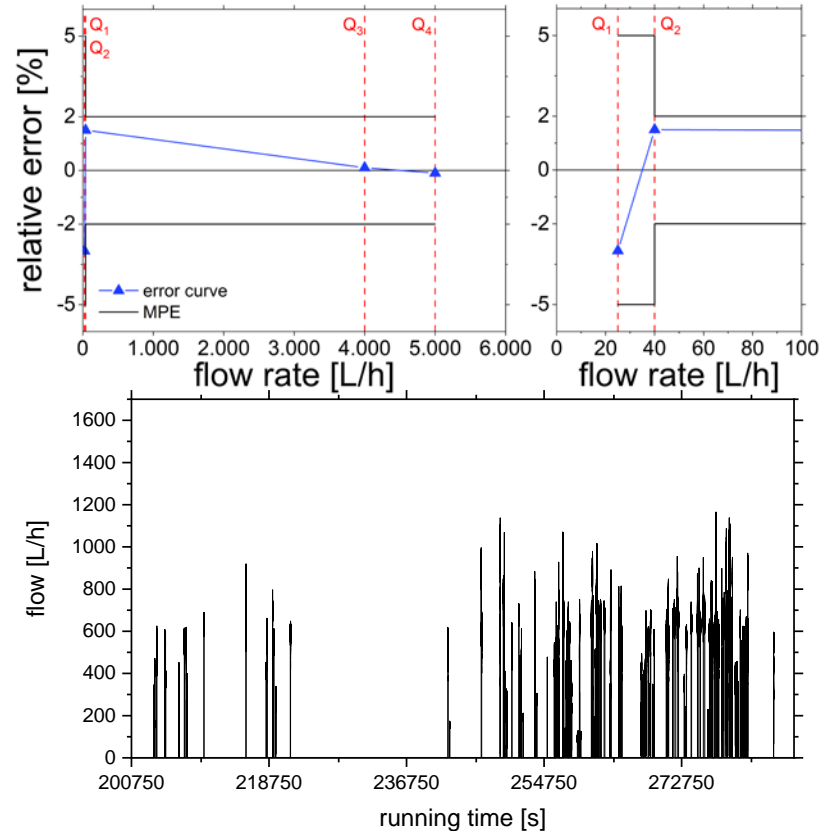
$$Q_2 = 1,6 \cdot Q_1 = 40 \text{ L/h}$$

- Q_3 : permanent flow rate

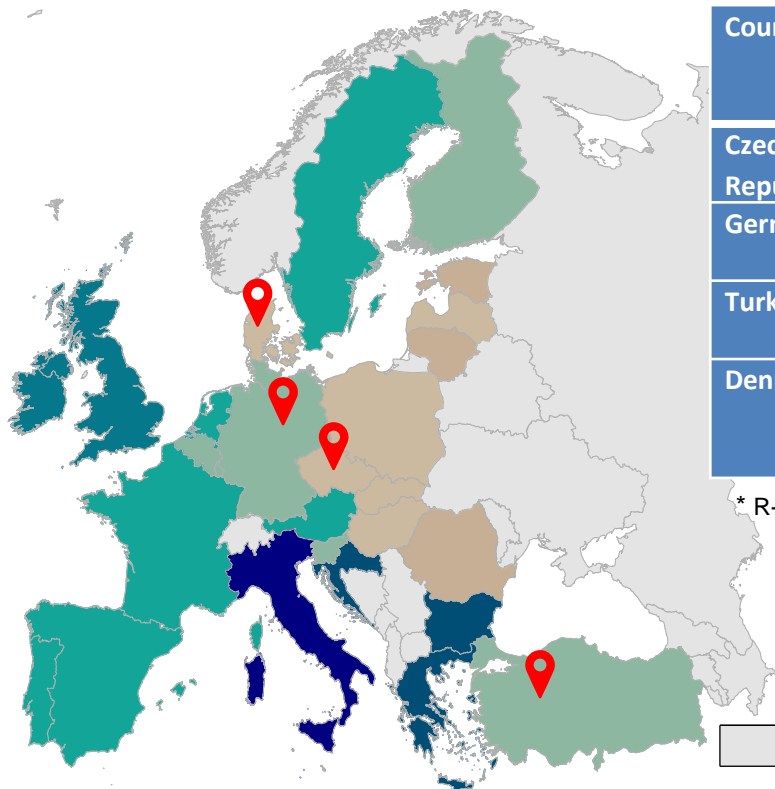
$$Q_3 = 4000 \text{ L/h}$$

- Q_4 : overload flow rate

$$Q_4 = 1,25 \cdot Q_3 = 5000 \text{ L/h}$$



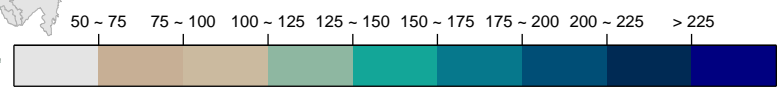
1. Current water consumption measurements
 - Representative
→ **Presentation** Johan Bunde Kondrup, FORCE
 - Comparable
2. Representative test profiles for test rigs
 - Derivation of test profiles from real-world data
 - Flow standards for calibration under dynamic conditions
→ **Presentation** Florestan Ogheard, CETIAT



Country	Water meter for data acquisition	Measurement resolution [L/pulse]	Duration [days]	Objects [#]
Czech Republic	Q ₃ : 1.6 m ³ /h R 250 ultrasonic water meter	0.02	15	2
Germany	Q ₃ : 4 m ³ /h R160 ultrasonic water meter	0.1	24 – 75	59
Turkey	Q ₃ : 2.5 m ³ /h R160 Piston type water meter	0.0167	1 – 23	32
Denmark*	Q ₃ : 2.5 m ³ /h ultrasonic water meter	Current flow L/h with 2 Hz resolution	2 – 26	24

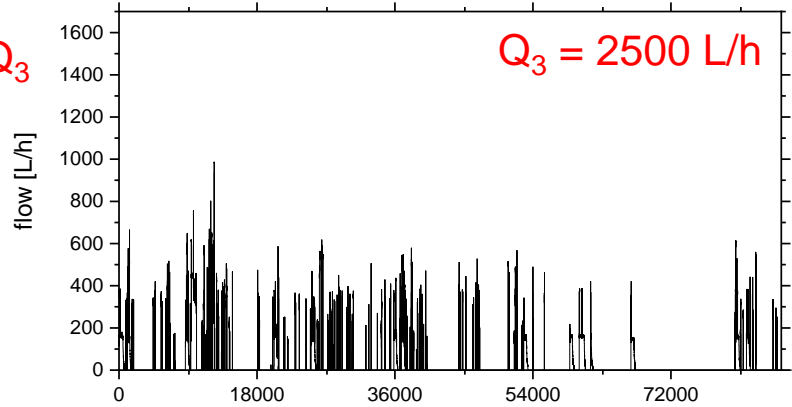
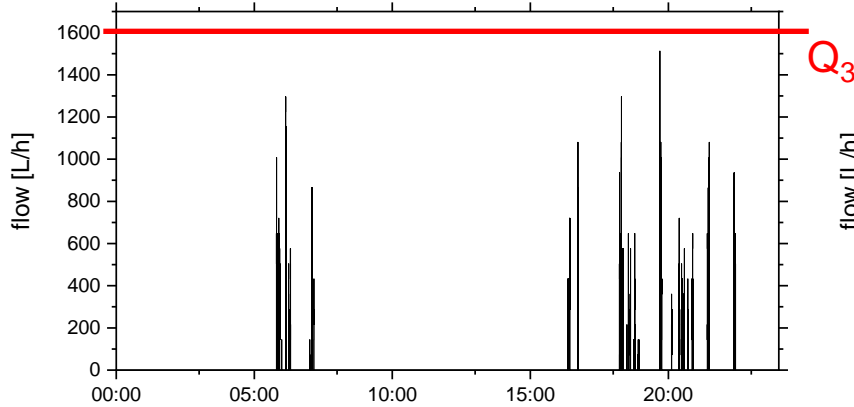
* R-Value unknown

Liter per Person per day , 2014/2015 (4)



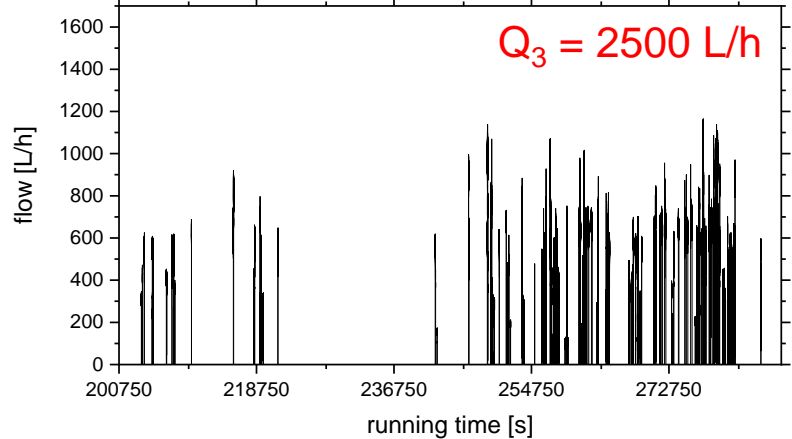
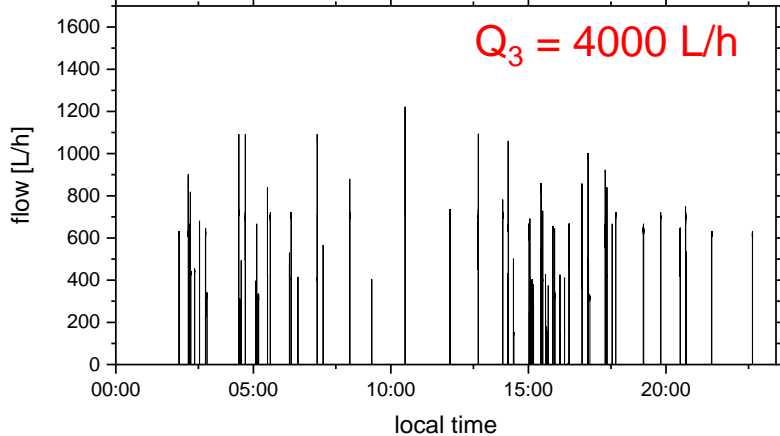
© EuroGraphics for the administrative boundaries

CZ

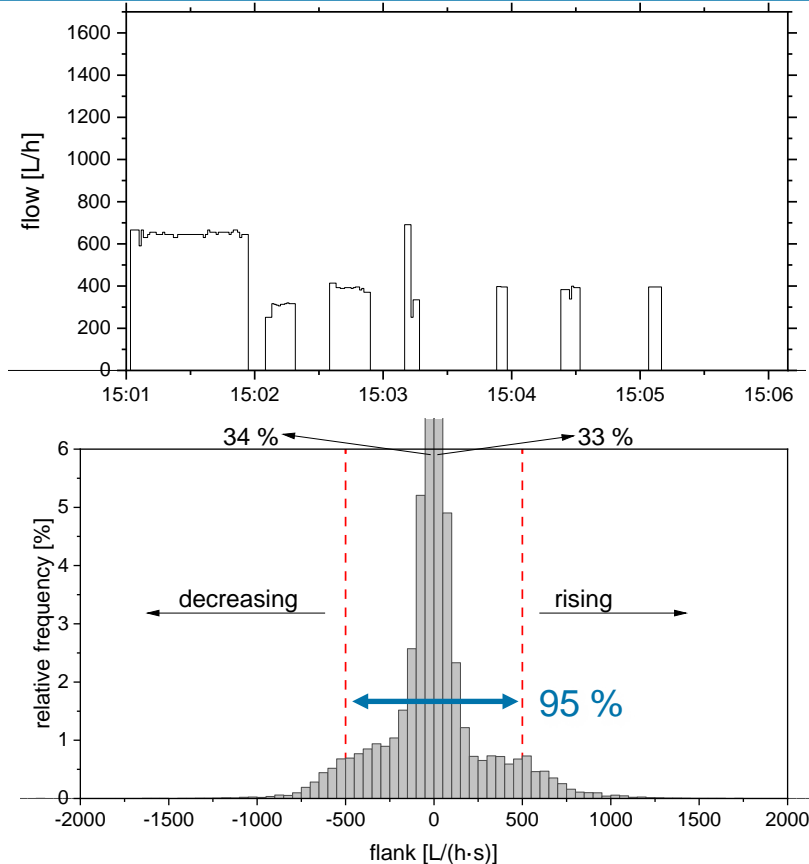


DNK

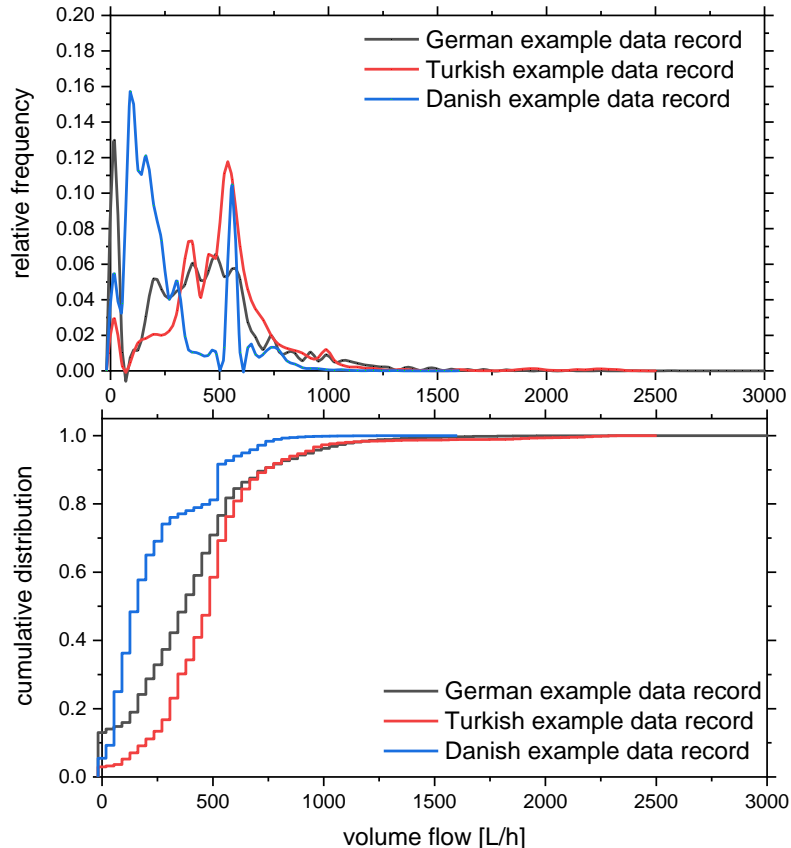
DE (5)



TUR

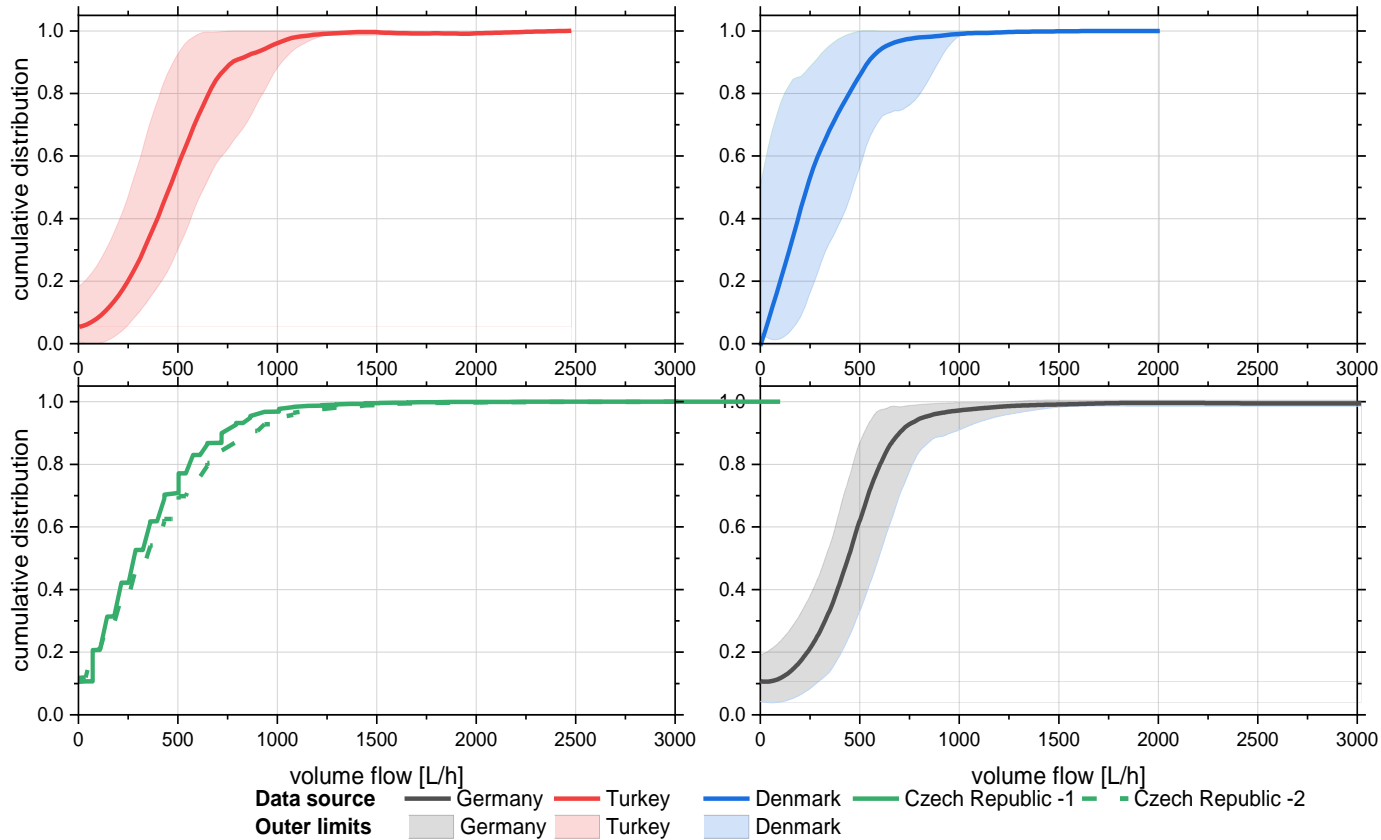


- Characterized by a multiple of single tapplings
- Different quantity and duration
- Analysis of data:
 - Minimum, Maximum, Median
→ identifying outliers
 - Change in flow amplitudes
 - Duration of flow amplitudes
 - Probability of flow amplitudes



- Probability of flow amplitudes
 - Different courses and intensities
 - Partly identical local maxima
 - Sum function as central concept
 - Comparison of different probability densities possible
 - Cumulative distribution function of all objects
 - 95 % of all flows < 1200 l/h

PTB Consumption measurements

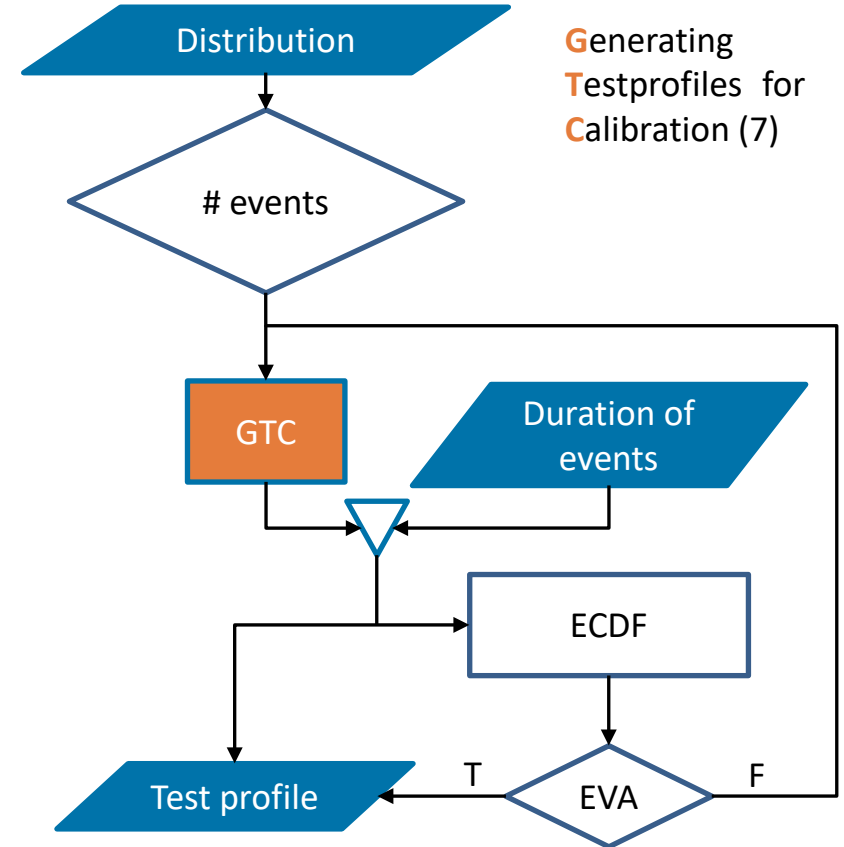


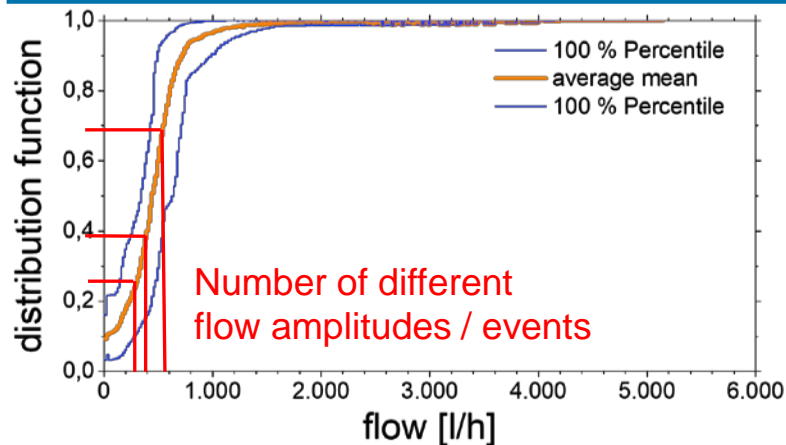
- Empirically determined band of flow rates incl. occurring probability
- Mean value curve as a statistically secured basis for model formation (6)

■ Modeling

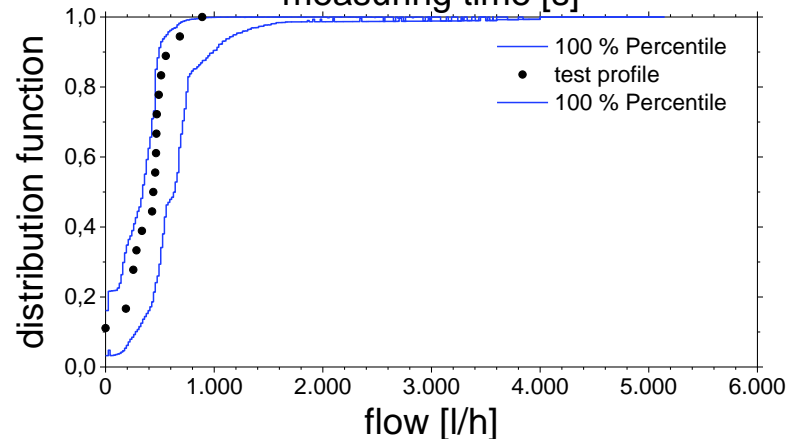
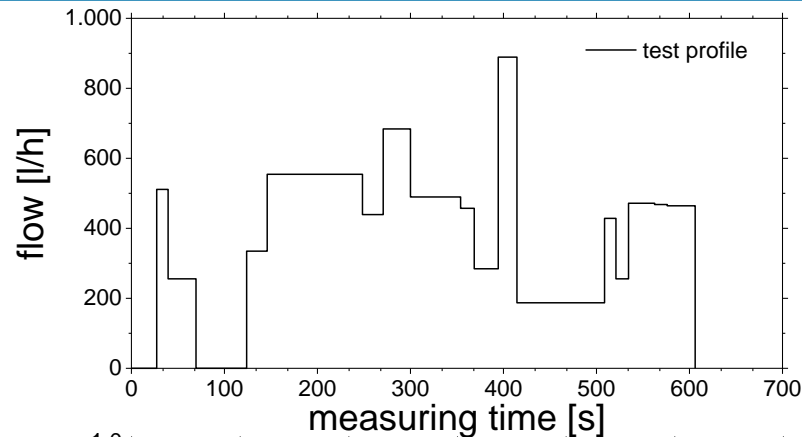
- Generation of pseudo-random numbers (number of events) with weighted distribution based on a uniformly distributed $[0,1]$ number sequence
- Inversion method

$$F^{-1}(y) = \inf \{x: F(x) \geq y\}$$





flow [l/h]	duration [s]	cum. duration [s]
511.2	27.174	27.174
255.6	12.262	39.436
0.0	30.000	69.436
334.8	54.432	123.868
554.4	22.103	145.971
...



- Mapping of generated test profiles
 - Suitable references
 - Determine accumulated volume and time synchronous flow rate
 - Time resolution $< 1\text{s}$
 - Repeatable and reproducible
 - Change of flow amplitudes within $< 1\text{s}$
 - Small deviation from the specified target flow rate
 - Stable Environmental and test rig conditions

- Occurring flow amplitudes are characterized by a multiple of single tappings
- Tappings are of different quantities and duration
- 95 % of rising and falling flanks of the flow rates are within ± 500 L/h
- Main class (67 %) of changing flow amplitudes are within ± 50 L/h
- Comparison of the recorded data via cumulative frequency possible
 - Creation of distribution ribbon for each country (except CZ)
 - Similarity in their course,
 - no seasonal effect

- ...
 - Maximum recorded flow between 2500 L/h and 4000 L/h
 - 95 % of all flow amplitudes < 1500L/h
- Water consumption behavior within Europe is comparable
- Derivation of test profiles:
 - Based on the median cumulative distribution and the mean duration of flow amplitudes
 - Algorithm for the generation of stochastically secured and computer-aided test profiles
 - Validated, tested and applied

EMPIR



The EMPIR initiative is co-funded by the European Union's Horizon 2020 research and innovation programme and the EMPIR Participating States

This project has received funding from the EMPIR programme co-financed by the Participating States and from the European Union's Horizon 2020 research and innovation programme. (Article 38.1.2)



Physikalisch-Technische Bundesanstalt Braunschweig and Berlin

Bundesallee 100

38116 Braunschweig

Dr. Daniel Schumann

Telefon: 0531 592-1443

E-Mail: daniel.schumann@ptb.de

www.ptb.de



State: 09/21

- (1) EUROPEAN PARLIAMENT. Drinking water in the EU: better quality and access. <https://www.europarl.europa.eu/news/en/headlines/society/20181011STO15887/drinking-water-in-the-eu-better-quality-and-access..> accessed:: 2021-03-15 08:34.
- (2) OIML R 49, 2013. Water meters for cold potable and hot water.
- (3) ISO 4064, 2014. Water meters for cold potable water and hot water.
- (4) EUROPEAN COMMISSION, Eurostat. <https://ec.europa.eu/eurostat/data/database>. accessed: 2020-02-24, 11:30
- (5) Martin, T., Korth, A. und Schubert, K.: Aktualisierung der Verbrauchsganglinien für Haushalte, Kleingewerbe und öffentliche Gebäude sowie Entwicklung eines Modells zur Simulation des Wasserbedarfs: Abschlussbericht, <https://www.dvgw-regelwerk.de/plus/#technische-regel/dvgw-abschlussbericht-w-201510/7388b4>
- (6) Schumann, Daniel, et al. Measurements of water consumption for the development of new test regimes for domestic water meters. *Flow Measurement and Instrumentation* 79 (2021): 101963.
- (7) Schumann, Daniel. Entwicklung von realitätsnahen Prüfprozeduren für Durchflussmessgeräte basierend auf realen Verbrauchsprofilen:" vom Praxis-zum Prüfprofil am Beispiel von Wasserzählern". Diss. Universität Rostock, 2019.